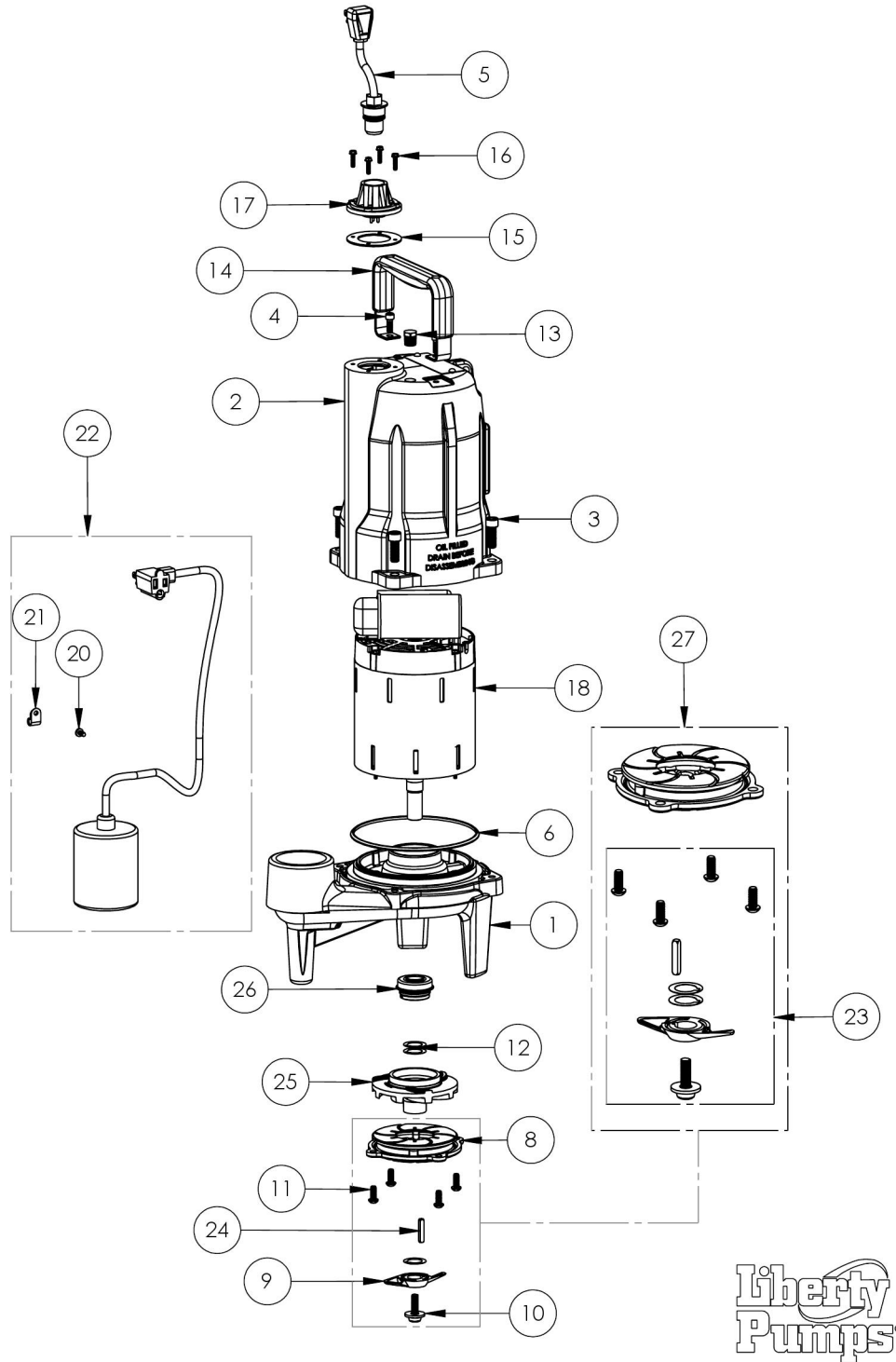


Liberty Pumps [Updated: Jun. 13, 2013]/GRINDER PUMPS & SYSTEMS/PRG100 SERIES/PRG101A-2/PRG101A-2 (B70)



## Liberty Pumps [Updated: Jun. 13, 2013]/GRINDER PUMPS &amp; SYSTEMS/PRG100 SERIES/PRG101A-2/PRG101A-2 (B70)

No.	Part No.	Qty.	Description	US List
1	340100R	1	VOLUTE, POWDER COATED	
2	340000R	1	MOTOR HOUSING, POWDER COATED	
3	5862000	4	BOLT, 3/8-16X1 SHCS SS	\$1.23
4	8103000	2	SCREW 1/4-20x5/8" HX SKT SS	\$0.28
5	K001008	1	POWER CORD, 115V, 25 FOOT CORD	\$34.00
6	3403000	1	O-RING	
8	3404000	1	MACHINED CUTTER PLATE	
9	3406000	1	CUTTER 2 BLADE MACH	
10	56360B0	1	FLANGED IMPELLER BOLT, M8 THREA	\$3.50
11	3405000	1	1/4-20 X 5/8 BUTTON HEAD SS CAP S	
12	K001445	4	ROTARY CUTTER SHIM KIT	\$26.00
13	50710A0	1	PIPE PLUG, 1/4" HEX HD BRASS NPTF	
14	3411200	1	HANDLE	\$9.49
15	5060000	1	CORD PLATE GASKET	
16	8064000	4	#8-32 x 5/8 HEX WASHER HEAD SCRE	
17	5014000	1	CORD PLATE	\$4.76
18	3407000	1	60Hz 1HP MOTOR	
20	8082000	1	#10-24 x 3/8 EPOXY LOCK SCREW	\$0.11
21	8014000	1	CABLE CLAMP	
	8014200		CABLE CLAMP	
22	K001064	1	FLOAT SWITCH, 115V, 25 FOOT CO	\$96.00
23	K001447	1	PROVORE CUTTER REPLACEMENT KIT	\$99.00
24	56350C0	1	KEY, 3/16 X 3/16 X 1.06"	
25	3410000	1	9 VANE IMPELLER	
26	5633000	1	3/4" UNITIZED SHAFT SEAL	
27	K001555	1	CUTTER KIT, PROVORE WTH CUTTER	\$280.84