

Submersible Non-Clog Pumps

SE411ASP or SEV412ASP:

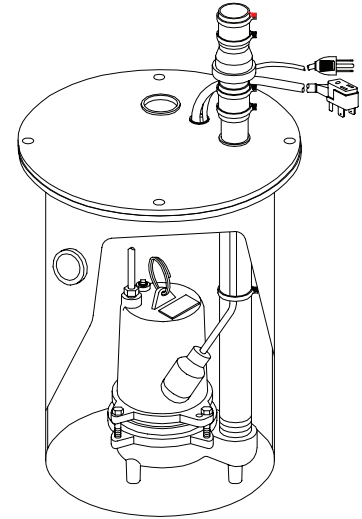
- One - **SE411A or SEV412A**,
60Hz Heavy duty sewage pump
- One - **Level Control**
Mechanical switch molded inside of a waterproof float. Single control turns pump on and off automatically.
- One - **1830 Polyethylene Basin**
18" (457mm) Dia. x 30" (762mm) Deep, with 4" (102mm) Inlet Hole.
- One - **4" (102mm) Flexible Pipe Fitting Inlet**
Super-tuff Sanoprene construction
- One - **18S22 Steel Cover**
With black powder coating, 2" (51mm) vent and 2" (51mm) Discharge and cord openings
- One - **2" (51mm) Vertical Check Valve**
With hose adaptors and clamps

Sch. 40 Discharge pipe, cover gasket, cover hardware, cord grommet, discharge and vent grommets also included.

SEV412ASPI:

A Pre-Assembled simplex package same as SEV412ASP except it is IAPMO approved.

For additional pump data see: Sect. C pages 1 & 2 for SE411 and
 Sect. C pages 5 & 6 for SEV412.



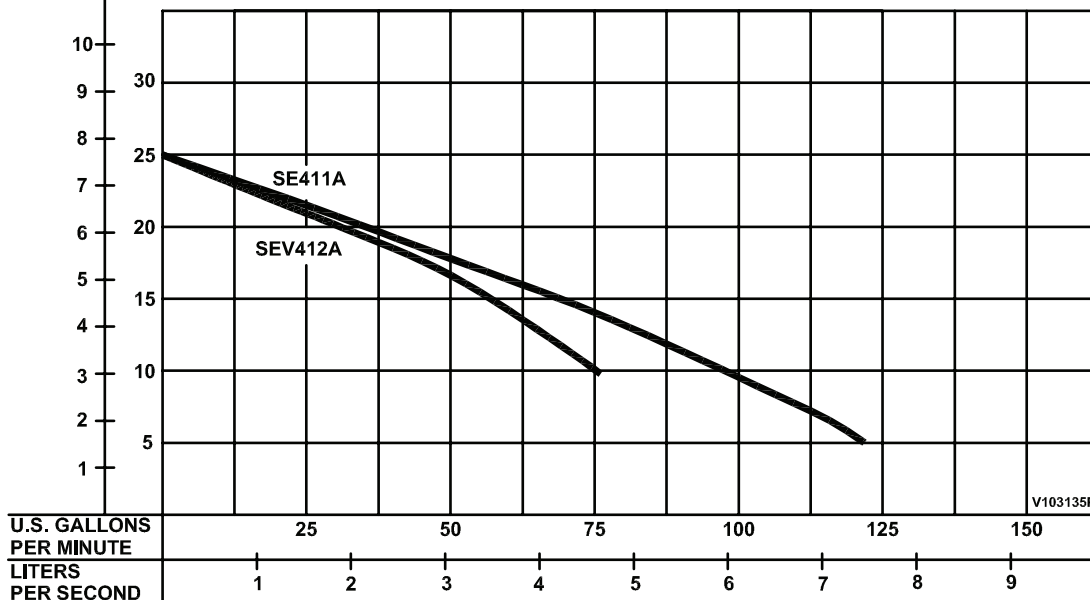
**Series: SE411ASP
SEV412ASP
SEV412ASPI***

(*) IAPMO APPROVED

DESCRIPTION:

SIMPLEX SYSTEMS (ONE PUMP) ARE GOOD FOR RESIDENCES AND SMALL INDUSTRIAL SEWAGE OR SUMP APPLICATIONS. THEY ARE DESIGNED TO HANDLE WASTES FROM LAVATORIES, LAUNDRY TUBS, FLOOR DRAINS, WATER CLOSETS, ETC., AND WILL PUSH THE WATER FROM BELOW GROUND UP TO WHERE NORMAL DRAINAGE WILL HANDLE IT.

TOTAL HEAD
METERS FEET

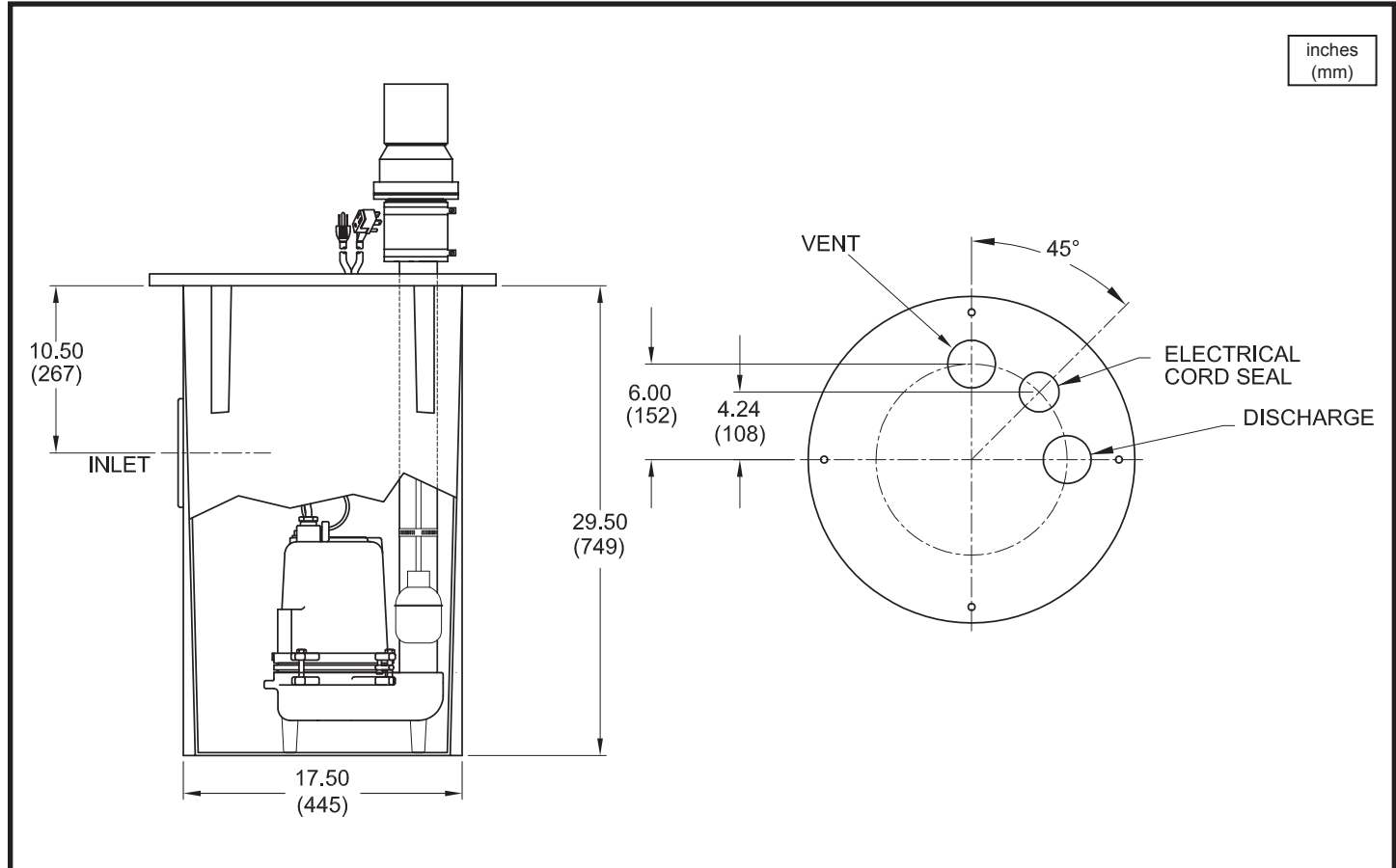


Testing is performed with water specific gravity of 1.0 @ 68°F (20°C), other fluids may vary performance

Series SE & SEV-ASP

Simplex Systems Packaged Systems
Pre-Assembled - 30 gal.

Submersible Non-Clog Pumps



MODEL NO	PART NO	DISCHARGE SIZE inch (mm)	VENT SIZE inch (mm)	INLET SIZE inch (mm)
SE411ASP	103135	2" (51)	2" (51)	4" (102)
SEV412ASP	102160	2" (51)	2" (51)	4" (102)
SEV412ASPI	102161	2" (51)	2" (51)	4" (102)
SEV412ASP-P *	102160C	2" (51)	2" (51)	4" (102)

* POLY COVER 102227 IS USED IN PLACE OF STEEL COVER

IMPORTANT !

- 1.) PUMP MAY BE OPERATED "DRY" FOR EXTENDED PERIODS WITHOUT DAMAGE TO MOTOR AND/OR SEALS.
- 2.) INSTALLATIONS SUCH AS DECORATIVE FOUNTAINS OR WATER FEATURES PROVIDED FOR VISUAL ENJOYMENT MUST BE INSTALLED IN ACCORDANCE WITH THE NATIONAL ELECTRIC CODE ANSI/NFPA 70 AND/OR THE AUTHORITY HAVING JURISDICTION. THIS PUMP IS NOT INTENDED FOR USE IN SWIMMING POOLS, RECREATIONAL WATER PARKS, OR INSTALLATIONS IN WHICH HUMAN CONTACT WITH PUMPED MEDIA IS A COMMON OCCURRENCE.

SECTION B
PAGE 6
DATE 5/14

CRANE[®]

A Crane Co. Company

PUMPS & SYSTEMS

USA: (937) 778-8947 • Canada: (905) 457-6223 • International: (937) 615-3598